



ecomax

by **HOBART**

You need...

- ✓ Value for money...
- ✓ Economical operation...
- ✓ Flexible for whatever your kitchen needs...
- ✓ Fast performance...
- ✓ A hygienic wash result...
- ✓ A cleaner, more efficient machine...
- ✓ Easy to use so fewer operator mistakes...
- ✓ Simple installation...

ecomax delivers...

- an all-in-one economical solution providing a powerful wash with great results
- compact 20 litre wash tank, quick to fill and low running costs
- suitable for straight through or corner operation
- washes up to 40 racks per hour
up to 720 plates per hour
- thermostop rinse control ensures the machine will only rinse at the correct temperature
- integral detergent and rinse aid dosing equipment
- facia mounted push button controls
- fitted with drain pump and rinse booster pump as standard

CLH40D

General

Dimensions	635mm(w) 735mm(d) 1479mm(h)
Height hood open	1909mm
Width with handle	720mm
Number of racks	1 x plate rack 1 x open rack 1 x 4 compartment cutlery basket
Rack Size	500mm x 500mm
Max pints/plates per rack	18
Max racks p/h	40
Net Weight (kg)	108
Rinse booster pump	YES
Built in detergent dispenser	YES
Built in rinse aid dispenser	YES
Double skinned hood	NO
Controls	MECH
Class A air gap	YES
Thermostat Control	YES
Programme times. secs	90-120
Water consumption/cycle	2.7L
Wash tank capacity	20L
Wash tank heating	2.5kW
Rinse tank capacity	6L
Rinse booster heating	6.0kW
Drain pump	YES
Wash pump rating	0.8kW
Wash pump flow rate	350L/min
Rinse pump rating	0.15kW
Rinse pump flow rate	36L/min
Noise level(dB)	65
Rinse time	15 sec
Water	
Water pressure	1-4BAR
Water temp	50-65°C
Electric	
Voltage 3P	400/50/3/N
Voltage 1P	230/50/1 (as standard)
Total loading 3P	3x16A/6.8kW
Total loading 1P	30A/6.8kW



Technical details may be subject to change at any time without prior notice.

HOBART INDEPENDENT

Southgate Way, Orton Southgate, Peterborough PE2 6GN

0870 168 8881

or visit www.hobartindependent.co.uk

ecomax

by **HOBART**

DISHWASHERS

CHH50D
CHH70D



ecomax

by **HOBART**

You need...

- ✓ A powerful wash with great results...
- ✓ A quieter wash up area...
- ✓ Economical operation...
- ✓ Flexible for whatever your kitchen needs...
- ✓ Fast performance...
- ✓ A hygienic wash result...
- ✓ Quick start up and lower bills...
- ✓ A cleaner, more efficient machine...
- ✓ Easy to use so fewer operator mistakes...
- ✓ Simple installation...

ecomax delivers...

- an all-in-one economical solution
- double skinned hood design*
- compact 20 litre wash tank, quick to fill and low running costs
- suitable for straight through or corner operation
- washes up to 70* racks per hour
up to 1,260* plates per hour
- thermostop rinse control ensures the machine will only rinse at the correct temperature
- energy saving standby feature
- integral detergent and rinse aid dosing equipment
- hood mounted electronic control system with digital temperature display, cycle counter and diagnostic system
- fitted with drain pump and rinse booster pump as standard

*feature only found on CHH70D

Tel: 0870 168 8881

www.hobartindependent.co.uk

CHH50D

CHH70D

General

Dimensions

Height hood open

Width with handle

Number of racks

Rack Size

Max pints/plates per rack

Max racks p/h

Net Weight (kg)

Rinse booster pump

Built in detergent dispenser

Built in rinse aid dispenser

Double skinned hood

Controls

Class A air gap

Thermostop Control

Programme times. secs

Water consumption/cycle

Wash tank capacity

Wash tank heating

Rinse tank capacity

Rinse booster heating

Drain pump

Wash pump rating

Wash pump flow rate

Rinse pump rating

Rinse pump flow rate

Noise level(dB)

Rinse time

Water

Water pressure

Water temp

Electric

Voltage 3P

Voltage 1P

Total loading 3P

Total loading 1P

635mm(w)

735mm(d)

1529mm(h)

1969mm

720mm

1 x plate rack

1 x open rack

1 x 4 compartment
cutlery basket

500mm x 500mm

18

60

108

YES

YES

YES

NO

ELECT

YES

YES

60-90-180

2.5L

20L

2.5kW

6L

6.0kW

YES

0.8kW

350L/min

0.15kW

36L/min

65

12 sec

1-4BAR

50-65°C

400/50/3/N

230/50/1 (as standard)

3x16A/6.8kW

30A/6.8kW

635mm(w)

735mm(d)

1529mm(h)

1969mm

720mm

1 x plate rack

1 x open rack

1 x 4 compartment
cutlery basket

500mm x 500mm

18

70

110

YES

YES

YES

YES

ELECT

YES

YES

55-110-150

2.5L

20L

2.5kW

6L

9.5kW

YES

1.1kW

450L/min

0.15kW

36L/min

63

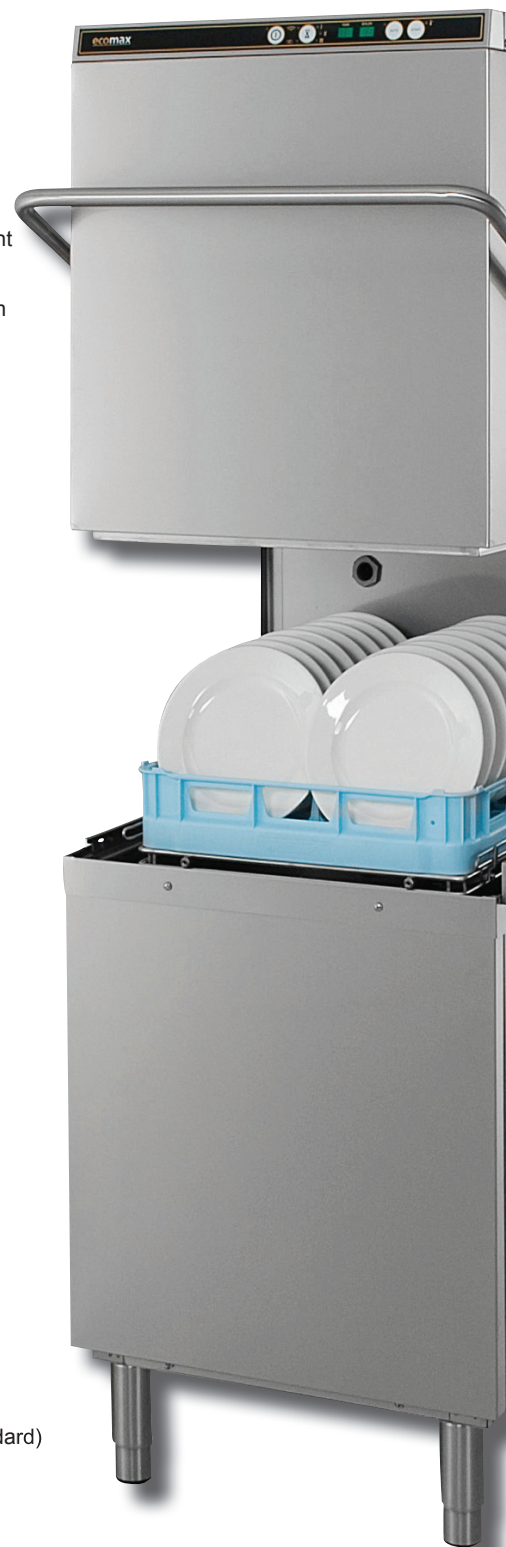
12 sec

1-4BAR

15-65°C

400/50/3/N (as standard)

3x16A/10.6kW



Technical details may be subject to change at any time without prior notice.

HOBART INDEPENDENT

Southgate Way, Orton Southgate, Peterborough PE2 6GN

0870 168 8881

or visit www.hobartindependent.co.uk

ecomax

by **HOBART**